

NOTES

1. CONTRACTOR TO VERIFY LOCATION OF ALL UTILITIES PRIOR TO INITIATION OF ANY DEMOLITION OR CONSTRUCTION OPERATIONS. ANY DAMAGE TO EXISTING UTILITIES ON SITE OR ADJACENT PROPERTY SHALL BE CONTRACTORS RESPONSIBILITY TO REPAIR.
2. COORDINATE ALL IRRIGATION INSTALLATION OPERATIONS WITH CIVIL AND ELECTRICAL ENGINEERING SHEETS.
3. CONTRACTOR TO COORDINATE INSTALLATION OF IRRIGATION CONDUIT AND SLEEVES UNDER HARD SURFACE AREAS (WALKS, ROADS, PARKING AREAS, ETC.) WITH RESPECTIVE CONTRACTORS. SEE PLANS.
4. CONTRACTOR TO OBTAIN AND PAY FOR ALL PERMITS AND FEES REQUIRED FOR THIS WORK.
5. CONTRACTOR SHALL FURNISH ALL LABOR, TOOLS, EQUIPMENT AND HARDWARE NECESSARY FOR PRODUCTION, EXECUTION AND COMPLETION OF ALL IRRIGATION WORK.
6. CONTRACTOR SHALL LOCATE AND TAP INTO EXISTING SERVICE FOR RECLAIMED WATER SERVICE. VERIFY ALL IDAHO DEQ REQUIREMENTS ARE MET.
7. WHERE LINES ARE SHOWN BELOW PAVEMENT ADJACENT TO LANDSCAPE AREAS, THEY ARE TO BE LOCATED IN THE LANDSCAPE AREA UNLESS SHOWN WITH A SLEEVE SYMBOL.
8. SYSTEM DESIGN BASED ON THE ASSUMPTION OF THE AVAILABILITY OF 110 GPM AT 80 PSI AT THE SOURCE, 60 PSI AT THE HEAD.
9. LAYOUT SYSTEM AS DESIGNED. ALL CHANGES TO LAYOUT TO BE APPROVED IN WRITING BY LANDSCAPE ARCHITECT PRIOR TO INSTALLATION.
10. ALL ELECTRICAL WORK TO MEET OR EXCEED N.E.C., STATE CODES, LOCAL CODES, AND MANUFACTURERS RECOMMENDATIONS.
11. 1/4" WIRE NOT TO EXCEED 1500 RUNS BEFORE SIZING UP TO 1/2" WIRE.
12. ALL CONTROL VALVES SHALL BE INSTALLED IN 13" X 20" VALVE BOXES, MAX. 1 VALVE PER BOX. SEE SPECIFICATIONS FOR TYPES AND MODEL NUMBERS.
13. LOCATE CONTROLLER AS SHOWN ON PLANS.
14. COORDINATE PLACEMENT OF HEADS IN RELATION TO FINISH GRADE WITH SEEDING AND FINE GRADE CONTRACTOR.
15. ALL WIRE SPLICES TO BE DONE WITH 3M DBV SNAP CONNECTOR AND SEALER OR APPROVED EQUAL.
16. ALL NEW IRRIGATION HEADS SHALL HAVE DRAIN CHECK VALVE TO PREVENT LOW HEAD DRAINAGE.
17. NO CONTROL WIRES TO BE PLACED IN THRUST BLOCKS. LOCATE WIRES ON OPPOSITE SIDE OF THRUST BLOCK.
18. FOR REMOTE CONTROL VALVE INFORMATION (SIZE, TYPE, ZONE SIZE) REFER TO ZONE SCHEDULE ON SHEET THIS SHEET.
19. CONTRACTOR SHALL REMOVE AND DISPOSE OF ALL ROCK AND DEBRIS BROUGHT TO THE SURFACE AS A RESULT OF TRENCHING OPERATIONS.
20. PRIOR TO COMPLETE BACKFILLING, MAINLINE TO BE FILLED WITH WATER AND PRESSURE TESTED TO 125 PSI. MAINLINE SHALL NOT LOSE MORE THAN 5 PSI IN 24 HOURS. NO LEAKS ARE ACCEPTABLE. THE CONTRACTOR SHALL COMPENSATE THE LANDSCAPE ARCHITECT FOR ALL ADDITIONAL SITE VISITS FOR RE-TESTING.
21. CONTRACTOR SHALL PERFORM WATER COVERAGE TEST PRIOR TO SEEDING/GOODING TURF.
22. CONTRACTOR SHALL COORDINATE WINTERIZATION OF THE SYSTEM WITH THE U OF I STAFF. THE CONTRACTOR SHALL INSPECT, ADJUST & MAKE ANY NECESSARY REPAIRS TO THE SYSTEM THE SPRING FOLLOWING INSTALLATION.
23. CONTRACTOR SHALL CORRECT, WITHOUT DELAY, AT CONTRACTORS EXPENSE, ANY TROUBLE WHICH DEVELOPS WITH ANY PART OF THE SYSTEM DUE TO FAULTY WORKMANSHIP OR MATERIALS FOR A PERIOD OF (1) ONE YEAR AFTER COMPLETION OF WORK AND FINAL INSPECTION AND ACCEPTANCE OF SYSTEM.
24. CONTRACTOR SHALL REFER TO SPECIFICATIONS FOR ADDITIONAL REQUIREMENTS.
25. CONTRACTOR SHALL BE RESPONSIBLE FOR ANY DAMAGE TO NEW OR EXISTING CONCRETE FLATWORK, ASPHALT, OR TURF AREAS AS A RESULT OF CONSTRUCTION ACTIVITIES.
26. ALL VALVE BOXES, SPRINKLERS, QUICK COUPLING VALVES, & CONTROL VALVES SHALL HAVE PURPLE LIDS, CAPS, OR COVERS.
27. CONTACT THE FACILITIES ASSISTANT DIRECTOR FOR LANDSCAPE & EXTERIOR SERVICES (LES) PRIOR TO PERFORMING WORK WHICH MAY IMPACT OR DAMAGE IRRIGATION SYSTEMS. COORDINATE PERMANENT MEETING AT LEAST 2 WEEKS PRIOR TO COMMENCEMENT OF LANDSCAPE & IRRIGATION WORK.
28. IN THE EVENT OF A DISCREPANCY, IMMEDIATELY NOTIFY LANDSCAPE ARCHITECT.

LEGEND



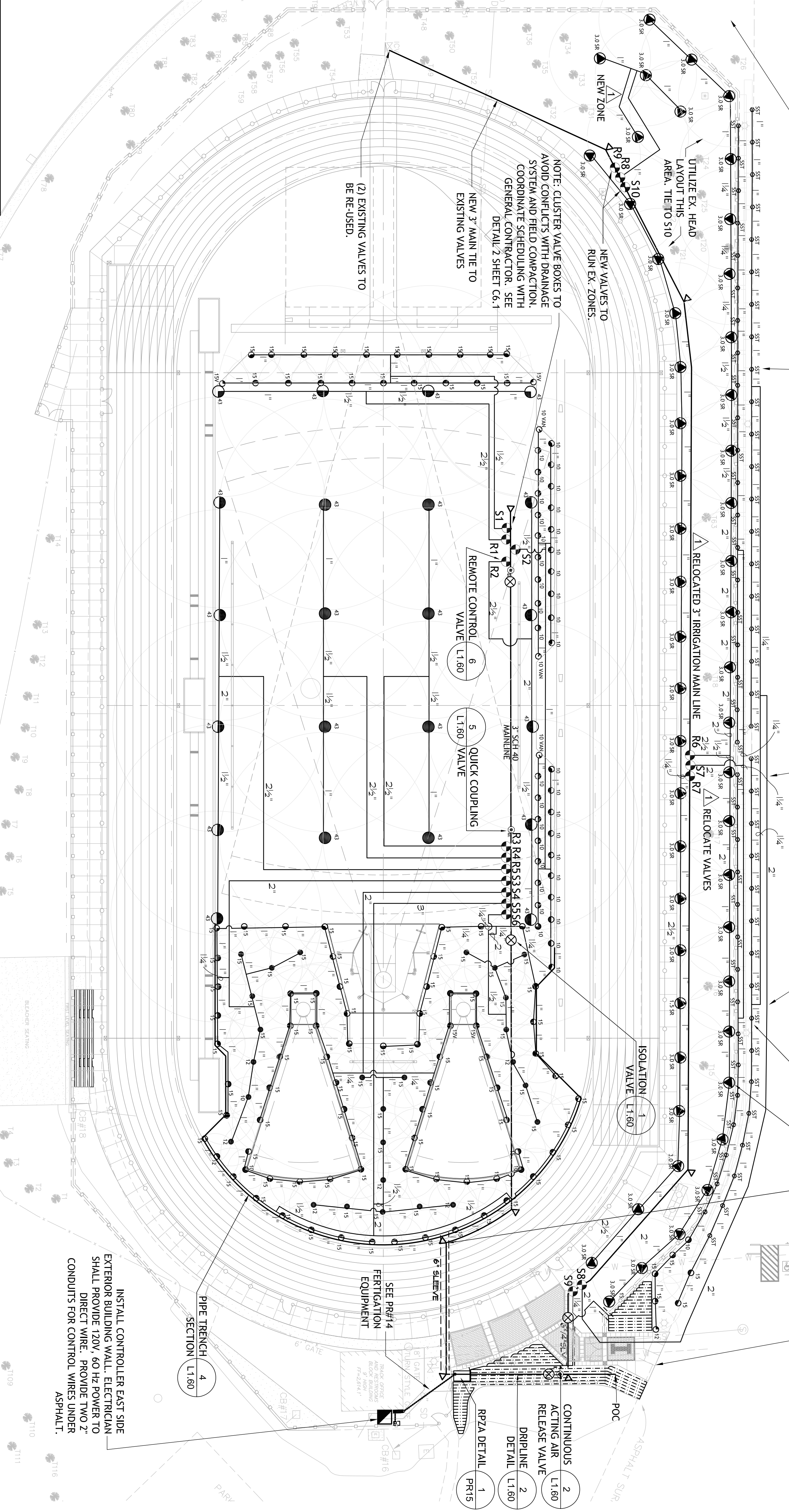
MATERIALS SCHEDULE

SYMBOL	DESCRIPTION
--------	-------------

	HUNTER 1-40-4P-A8S or 3RS GEAR ROTOR WITH STAINLESS STEEL RISER, PURPLE CAP, & NOZZLE AS INDICATED ON PLAN (LA = LOW ANGLE, SR = SHORT RADIUS).
	HUNTER 1-20-4P-A8S GEAR ROTOR WITH STAINLESS STEEL RISER & CHECK VALVE, & NOZZLE AS INDICATED ON PLAN (LA = LOW ANGLE, SR = SHORT RADIUS).
	RAIN BIRD 1804-5AM-HP SERIES POP-UP SPRAY SPRINKLERS WITH PURPLE CAP, AND NOZZLES AS INDICATED. 'V' INDICATES VAN SERIES.
	RAIN BIRD P28-NP-HAN SERIES ELECTRIC REMOTE CONTROL SCRUBBER VALVE WITH NON-POTABLE HANDLE ASSEMBLY, SEE ZONE SCHEDULE FOR VALVE SIZE.
	3/4" SCHEDULE 40 PVC MAINLINE, 18" MIN. COVER, 36" MIN COVER UNDER TRACK SURFACE.
	RAIN BIRD ESP-LX-SMRT-12 MODULAR SERIES CONTROLLER WITH MOISTURE SENSOR, MOUNT ON BUILDING EXTERIOR EAST SIDE RESTROOM BUILDING. EXPAND ADDITIONAL MODULES AS NECESSARY PER ADD ALTERNATES.
	WATROUS 2500 BRASS FULL PORT BALL VALVE, SIZE TO MATCH LINE.
	CLASS 200 PVC LATERAL LINE, SIZE AS INDICATED ON PLANS, 12" MIN. COVER, CONCRETE THRUST BLOCK.
	RAIN BIRD #44NP QUICK COUPLING VALVE WITH ONE (1) #44K KEY FOR EACH VALVE CONTINUOUS ACTING AIR RELIEF VALVE REUSE EXISTING POINT OF CONNECTION

ADJUST IRRIGATION ZONE IN THIS AREA AS REQUIRED BY TRACK IMPROVEMENTS. RELOCATED IRRIGATION MAIN, CUT/CAP LATERAL LINES, RELOCATE EX. HEADS FOR 100% COVERAGE OF TURF AREA. ADJUSTED IRRIGATION HEADS SHALL NOT OVERSPRAY ON TRACK OR THROUGH FENCE

NEW IRRIGATION ZONE LAYOUT AS SHOWN IN THIS AREA SHALL BE IMPLEMENTED IF ADD ALTERNATE #3 IS ACCEPTED. THIS AREA SHALL INCLUDE ZONES R6, S7 AND S8.



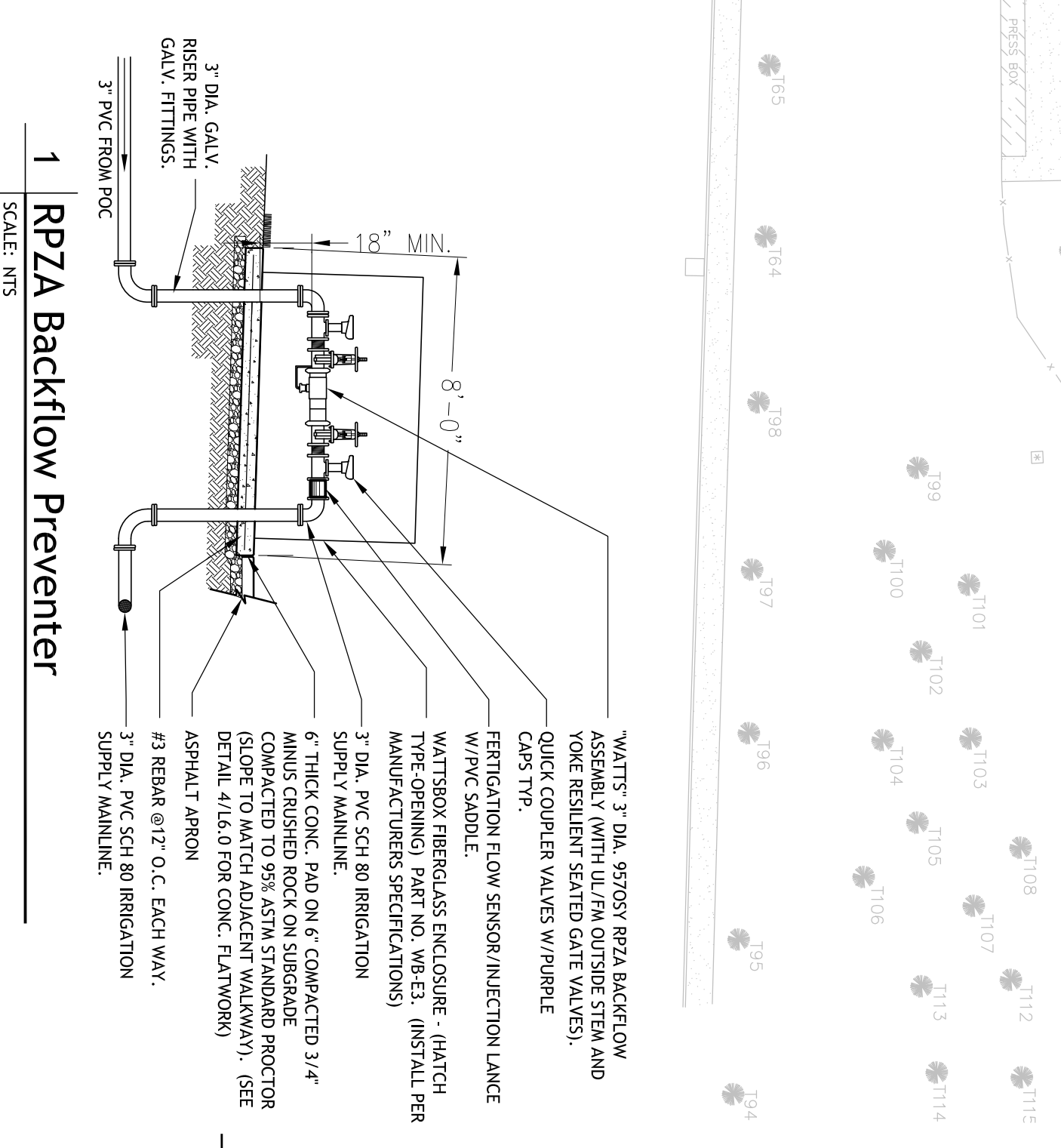
IRRIGATION PLAN

SCALE 1"=30'-0"

NORTH

ZONE SCHEDULE

ZONE #	GPM	PSI	VALVE
R1	60.4	60	200-PESB-PRS-D
R2	75.5	60	200-PESB-PRS-D
R3	60.4	60	200-PESB-PRS-D
R4	60.4	60	200-PESB-PRS-D
R5	75.5	60	200-PESB-PRS-D
S1	35.76	30	150-PESB-PRS-D
S2	30.56	30	150-PESB-PRS-D
S3	41.9	30	200-PESB-PRS-D
S4	51.94	30	200-PESB-PRS-D
S5	88.24	30	200-PESB-PRS-D
S6	69.51	30	200-PESB-PRS-D
ADD ALTERNATE #3			
R6	80.6	60	200-PESB-PRS-D
R7	68.2	60	200-PESB-PRS-D
R8	12.4	60	200-PESB-PRS-D
R9	48.72	60	200-PESB-PRS-D
S7	47.3	30	200-PESB-PRS-D
S8	48.72	30	200-PESB-PRS-D
S10	47.3	30	200-PESB-PRS-D
ADD ALTERNATE #4			
S9	25.51	30	100-PESB-PRS-D



ZONE S3 IS PART OF ADD ALTERNATE #4. SEE ADD ALTERNATE PLAN. IF ALTERNATE IS TAKEN, CAP AFFECTED LATERALS AND ADJUST EX. HEAD LOCATIONS. RELOCATE CONTROL WIRES AS NECESSARY, SALVAGE EX. HEADS AND RETURN TO OWNER.

INSTALL CONTROLLER EAST SIDE EXTERIOR BUILDING WALL. ELECTRICIAN SHALL PROVIDE 120V, 60 Hz POWER TO DIRECT WIRE. PROVIDE TWO 2" CONDUITS FOR CONTROL WIRES UNDER ASPHALT.